

CLEARWATER LAKE

clearwaterlake.org

2 0 1 9

*Visitor's
Guide*





Piedmont Area Chamber of Commerce

Adventure begins at the foot of the mountain

573-223-4046 | www.visitpiedmontmo.com

Ramshur Law Offices

Personal Injury and Worker's Compensation
Serving Southeast Missouri

Robert M. Ramshur
(Managing Partner since 1980)

119 South Main St.
Piedmont, MO 63957

Telephone: (573) 223-4213

Fax: (573) 223-4974

Toll Free (866) 5020-LAW

Areas of Practice:

- Insurance Law
- Real Estate Law
- Personal Injury - Plaintiff
- Motor Vehicle Accidents - Plaintiff
- Products Liability Law
- Medical Malpractice
- Worker's Compensation
- Property Disputes

When "experience" matters....
Call Ramshur Law Offices



"Proudly serving the people of Southeast
Missouri for over 40 years."

Email: ramshur@windstream.net Website: <http://www.ramshurlawoffice.net>

BEAVER SPRINGS



CAMPGROUND PIEDMONT, MISSOURI

www.beaverspringscamp.com

**FULL RV HOOK UPS W/
CABLE TV, E/W SITES,
TENTING & CABINS**



Your hosts:
Gregg & Emily Silvester

Located on Route HH 4 miles
west of Piedmont, 1 mile below
Clearwater Dam



**WI-FI, POOL, FIREWOOD,
FISHING, ICE
& PLAYGROUND**




Reservations:
(573) 223-4217

Email: info@beaverspringscamp.com





216 Piedmont Ave
Piedmont, Missouri

(573) 223-2075
Like us on 

MEXICAN RESTAURANT

CARRY OUT & CATERING

LUNCH MENU EVERY DAY FROM 11AM - 3PM

PRIVATE ROOM FOR LARGE GROUP GATHERINGS

Happy Hour FROM 5PM-7PM SUN-THURSDAY



Proudly serving over 10 years!

Store Hours

Sun-Thurs: 11am - 9pm

Fri-Sat: 11am - 10pm



Table of Contents



Maps & Tables

Corps Park Tables	8
Camp & Lodging Tables	9
Marina Amenities	9
Bluff View Recreation Area	10
Piedmont Park Recreation Area	13
River Road Recreation Area	14
Highway K Recreational Area	17
Webb Creek Recreation Area	18
Clearwater Lake Brush Piles	27
Clearwater Regional Map	41

Let The Adventure Begin	2
Campfire Favorites	4
Camping Guide Checklist	6
Campgrounds- Corps of Engineers	8
Camping, Lodging, and Marinas	9
Recreational Areas	10
Don't Get Stuck	20
Boating Information	22
Discover Fishing	26
Clearwater Lake Fishing Guide	28
Eating Local	30
Geo-Caching	30
Local Dining Guide	31
Slow Down	32
Black River Clean Up	35
Pack Your Hiking Shoes	36
Off The Beaten Path	38
Communities of Clearwater Lake	41
Visitor Services	43

2018 CLEARWATER LAKE ASSOCIATION *Members*

Beaver Springs Campground	Inside Cover
Black River Electric Co-Op	3
Bluff City Beer	
Bluff View On The Hill	12
Bluff View Marina	11
Brinkley Logging	5
Brown's Pharmacy	
Clark's Mountain Nursing Center	34
Clearwater Floor Covering	34
Clearwater Lake Resort	24
Clearwater Liquor Store	12
Clearwater Marina	25
Clearwater Space Center	4
Clearwater Store & Cafe'	15
Duncan Ready-Mix Concrete	4
Ellington Chamber of Commerce	39
Ernie's Sales & Service	Back Cover
First Midwest Bank of the Ozarks	40
Frank's Variety Store	
Hackworth Law Firm	
Heartland Realty	33
Hovis Insurance	
Kemper's Hideaway	15
McCormack/Ellington Telecom	
McDonald's	28
Medical Center Pharmacy	34

Mike Massa, Sr. Plumbing	37
Midwest Pumping & Portables	
Morrison-Worley Funeral Chapel	33
Ozark Adventures	
People's Community Bank	2
Piedmont Chamber of Commerce	Inside Cover
Piedmont Florist	
Piedmont Gas Mart	
Poplar Bluff Realty	42
Poplar Bluff Regional Medical Center	
R&L Marine	21
Ramshur Law Office	Inside Cover
Robbi's Zephyr Cafe'	5
Ruegg Funeral Homes, Inc.	34
Shelter Insurance	
Sunset Point Resort	
Tequila's Mexican Restaurant	Inside Cover
The Last Resort	16
Town & Country Grocery	16
Turnbough Building Supply	33
United Country Realty	
U.S. Army Corps of Engineers	21
Wayne County Auto Parts	21
Wayne County Journal-Banner	5

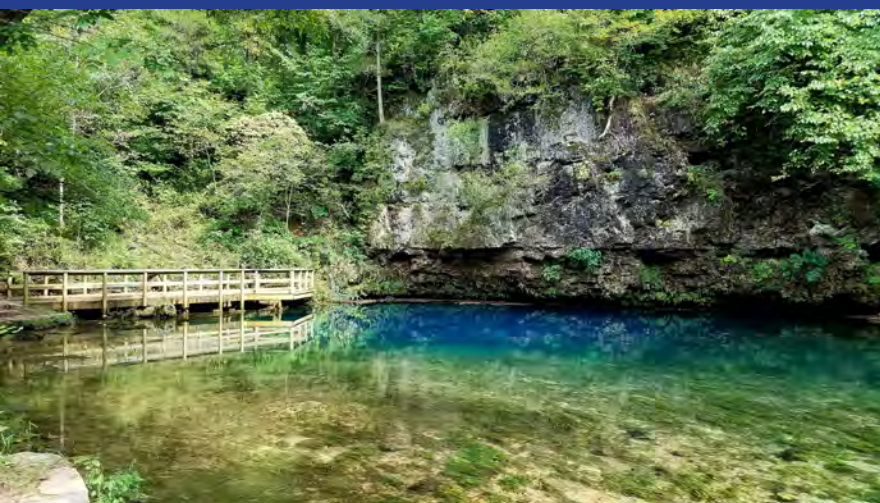
Let the adventure begin!

Written by
Sarah
Sadler

The Clearwater Lake area has a variety of options to create your next great outdoor adventure. Family fun for all ages, historic landmarks that have stood the test of time, scenic overlooks, and miles of trails...We've got it all! Start planning your Clearwater Lake adventure today!

Visit www.clearwaterlake.org to kickstart your plans today!

FAMILY VACATIONS WEEKEND GETAWAYS
GIRLS/GUYS WEEKENDS DAY TRIPS



**PIEDMONT
PROCESSING
PLANT**

Route HH on the way to the lake

- CAMPFIRE CUTS OF YOUR FAVORITE STEAKS and CHOPS • FRESH LUNCHMEAT • RETAIL CUTS
- SMOKED RIBS, HAMS, TURKEYS, BACON.

Custom Slaughtering
And Processing

573-223-4950



Open
8-6 M-F
8-5
Sat.

**Peoples
Community
Bank**

 **FDIC**

15 Locations To Serve You

Piedmont (573) 223-4000
Ellington (573) 663 2295
Annapolis (573) 598-1323
Wappapello (573) 222-8505
Puxico (573) 222-3800
Poplar Bluff (573) 686-3800
Bunker (573) 689-2222

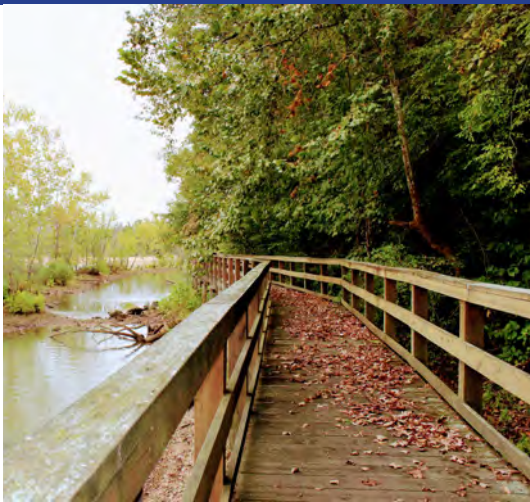
Doniphan (573) 996-2114
Greenville (573) 224-3267
Marble Hill (573) 238-0100
Naylor (573) 399-2217
Cabool (417) 962-3168
Republic (417) 732-7945
Seligman (417) 662-3291
Washburn (417) 826-5688



**FAMILY REUNIONS
OFFICE PARTIES**

**BIRTHDAYS
OR EVEN JUST BECAUSE!**


ANNIVERSARIES



Powering Communities, Empowering Members Since 1938.



Black River
Electric Cooperative

Your Touchstone Energy® Partner 

573-783-3381 www.brec.coop 1-800-392-4711



**1104 South Main Street
Piedmont, MO 63957**

**Monthly
Pizza Specials....**

573-223-2740

www.caseys.com

Campfire Favorites

Written by Sarah Sadler



For some a camping trip is not complete without bonfire roasted hot dogs followed by good 'ol s'mores. It's a long time camping tradition and many memories are made arguing over what makes for a perfectly toasted marshmallow.

It's hard to improve on a classic, but these mouth watering gourmet s'mores are hard to pass up:

Chocolate Peanut Butter: Graham cracker, a Peanut Butter cup, and a toasted marshmallow

S'moreo: Milk chocolate and a toasted marshmallow between two chocolate sandwich cookies

Grasshopper: Chocolate Graham cracker, a peppermint pattie, and a toasted marshmallow

Strawberry Shortcake: Graham cracker, white chocolate, fresh strawberries, and a toasted marshmallow

DUNCAN
ready-mixed concrete

573-223-4928

501 S. 2nd St
Piedmont, MO 63957

clearwater

SPACE

center, inc.

hwy 34 / Piedmont, MO

Piedmont & Bluff View

self-storage facility **573-223-4200**

Reynolds County Courier

reynoldscountycourier.com



Wayne County Journal-Banner

waynecojournalbanner.com

Advertise with us for best results.

"Your #1 News Source"

"We bring sellers and buyers together."

Ellington

PO Box 130 • Ellington, Mo. 63638
Phone: 573-663-2243 Fax: 573-663-2763

Piedmont

PO Box 97 • Piedmont, Mo. 63957
Phone: 573-223-7122 Fax: 573-223-7871

Fraternal Order of Eagles

PIEDMONT

Aerie #4227
Hwy 34 East

Hours: Monday - Friday; 12 noon to close
Saturday - Sunday; 11a.m. to close



*When you're
an Eagle
You have fun.....
helping others*

573-223-2233

Greg
Brinkley
LOGGING, INC.
Buyers of Standing Timber & Timber Land
Piedmont, MO 573.856.4343



Robbi's
Zephyr Cafe est. 1947
907 N. Main St. 573.223.2400

- Breakfast Daily • Lunch Specials
- Buffet on Fridays, Saturdays & Sundays
- Meeting/Banquet Room

Open 6:00 a.m. - 8:00 p.m. / 7 Days a Week
It's a Piedmont tradition!





**A GUIDE TO HELP
YOUR CAMPING
EXPERIENCE
BE ONE TO
REMEMBER**

Checklist Credit:
<https://adventurepeople.net>

BEFORE YOU LEAVE

- ☐ Charge rechargeable batteries
- ☐ Charge camera batteries
- ☐ Freeze blocks of ice
- ☐ Grocery shopping
- ☐ Get cash
- ☐ Print campsite directions & reservation information

SHELTER & SLEEPING

- ☐ Tent w/ poles, stakes and rain fly
- ☐ Footprint or tarp
- ☐ Sleeping pad, cot, or air mattress
- ☐ Sleeping bag
- ☐ Pillow
- ☐ Camp chair/stool

COOKING & MEALS

- ☐ Camping stove & propane/butane
- ☐ Cooking Grate (for campfire grilling)
- ☐ Kettle/Percolator
- ☐ Camping cookware & utensils
- ☐ Plates, bowls, cups, mugs, cutlery
- ☐ Cutting board & knives
- ☐ Pot holders/oven mitts
- ☐ Towels/napkins
- ☐ Biodegradable soap/sponge
- ☐ Buckets or sink for washing dishes
- ☐ Can opener/bottle opener/cork screw
- ☐ Ziploc bags (in various sizes)
- ☐ Storage containers
- ☐ Trash bags
- ☐ Aluminum foil/Plastic wrap
- ☐ Cooler and ice
- ☐ Tablecloth for picnic table
- ☐ Firewood/charcoal (if grilling)
- ☐ Fire starter/BBQ style lighter (long)

FOOD

- ☐ Ingredients for each meal + recipes
- ☐ Snack/fruit
- ☐ Condiments & spices
- ☐ Butter & cooking oil
- ☐ Beverages/coffee/tea/hot chocolate
- ☐ Drinking water & water bottle

PERSONAL ITEMS

- ☐ Toiletries
- ☐ Toothpaste/Toothbrush
- ☐ Deodorant
- ☐ Toilet paper/wet wipes
- ☐ Sunscreen & sunglasses
- ☐ Personal prescriptions & meds
- ☐ Lip balm
- ☐ Hand sanitizer
- ☐ Mirror/brush/comb
- ☐ Razor
- ☐ Eyeshades/earplugs
- ☐ Washcloth & towel
- ☐ Nail kit w/ clippers & tweezers

CLOTHING & FOOTWEAR

- ☐ Shirts (for layering)
- ☐ Quick-drying pants/shorts
- ☐ Underwear
- ☐ Sun-shielding hat or baseball cap
- ☐ Warm hat & gloves
- ☐ Swimsuit
- ☐ Hiking shoes or boots
- ☐ Socks (synthetic or wool)
- ☐ Long underwear (wool or poly-pro)
- ☐ Sleepwear
- ☐ Rain gear
- ☐ Fleece jacket
- ☐ Camp shoes (flip flops/crocs)

SAFETY & FIRST AID

- ☐ First-Aid kit
- ☐ Ibuprofen & Aspirin
- ☐ Insect Repellent/Insect-sting relief
- ☐ Allergy Medication
- ☐ Antacid tablets
- ☐ Burn cream
- ☐ Hydrocortisone
- ☐ 100% Aloe Vera Gel
- ☐ Moleskin (for blisters)
- ☐ Lubricating eye drops
- ☐ Loperamide tablets (for diarrhea)
- ☐ Poison oak/ivy prevention & treatment
- ☐ Emergency whistle
- ☐ Directions to the nearest ER

MISCELLANEOUS

- ☐ Trowel/hand shovel/axe/hammer
- ☐ Camping lantern
- ☐ Travel alarm clock
- ☐ Head lamp and/or flashlight
- ☐ Extra batteries
- ☐ Camera/camcorder/& memory cards
- ☐ Maps/guidebooks
- ☐ Cell phone car charger
- ☐ Swiss Army Knife
- ☐ GPS or compass
- ☐ Daypack + 10 essentials
- ☐ Entertainment- games, cards, books





Clearwater Lake is a great area for friends and families to come together and experience the fun of the great outdoors. Just as favorite lake activities and experiences vary from one person to the next, lodging preferences do as well. Some prefer to sleep under the stars while others require the simple luxuries that an RV, motel, cabin, or resort have to offer.

Whether you are looking for a quick overnight stop, a fun getaway, or an extended stay, Clearwater Lake offers something for everyone. A wealth of adventure and experience awaits you at Clearwater Lake! What are you waiting for? Plan your stay today!

Tables provided by Sarah Sadler

US Army Corps of Engineers CAMPGROUNDS	Campsites	Group Camping	Showers	Dump Station	Boat Ramp	Marina	Fish Cleaning	Picnic	Playground	Swimming Beach	Trail(s)	Guide Page
Bluff View	49		●	●	●	●	●	●	●	●	Interpretive	10
Hwy K	67		●	●				●	●			17
Piedmont Park	80		●	●	●	●	●	●	●	●		13
River Road	113	●	●	●	●		●	●	●		Bike, Hike, Interpretive, Multipurpose	14
Webb Creek	31		●	●	●	●	●	●	●	●		18
Water & Electric: \$20/night Electric: \$17/night at River Road, \$16/night at all others Non-Electric: \$14/night												
For Corps campground reservations call 1.877.444.6777 or visit recreation.gov												



Clearwater Lake MARINAS	Boat Rentals	Wave Runners	General Store	Fuel	Ice	Beer	Restaurant	Bait	Wi-fi	Ship Rental	Guide Page
Bluff View Marina 93 Hwy AA, Piedmont 573.223.4849 www.bluffviewmarina.net	●		●	●	●	●	●	●	●	DAILY, ANNUAL	11
Clearwater Marina 905 County Road 418, Piedmont 573.223.7224	●		●	●	●		●			ANNUAL	25
Webb Creek Marina 10350 Hwy H, Ellington, MO 573.461.2344 www.webbcreekmarina.com	●	●	●	●	●	●		●	●	DAILY, ANNUAL	19

Tables provided by Sarah Sadler

Clearwater Lake CAMP & LODGING	Lodging	Camping	Water View	Laundry	Shower House	Playground	Swimming Pool	Pet-Friendly	Cable TV	Came Room	Wi-Fi	Trailer Parking	Guide Page
Beaver Springs Campground Hwy HH, Piedmont 573.223.4217 www.beaverspringscamp.com	Cabins	●	●	●	●	●	●	●	●	●	●	●	Inside cover
Bluff View Inn 677 AA Highway, Piedmont 573.223.4445 www.bluffviewonthehill.com	Cabins			●	●			●	●		●	●	12
Clearwater Lake Resort Rt 3 Box 3583, Piedmont 573.223.4521 www.clearwaterlakeresort.com	Cabins	●		●		●	●		●	●	●		24
Kemper's Hideaway Resort Rt. 3 Box 3641, Piedmont 573.223.7324	Cabins	●	●		●	●		●	●	●	●	●	15
Scenic Rivers Motel 525 N. 2nd Street, Ellington 573.663.7722 www.scenicriversmotel.com	Motel, 14 Rooms							●	●		●	●	16
The Last Resort 59962 Route 21, Ellington 573.663.3623	3 Bedroom House			●				●	●			●	16
Webb Creek Cabins 9401 Hwy H, Ellington 573.461.2244	Cabins								●			●	Back cover

BLUFF VIEW RECREATION AREA:

At the northwest side of Clearwater Lake is the Bluff View Recreational Area. This area is popular for watching the birds along the bluffs of the Black River as it enters the main section of Clearwater Lake.

Bluff View may be reached from Piedmont by driving north on Highway 49, then west on Route AA, to the lake. Aptly named, Bluff View is across from the longest and highest bluff on Clearwater Lake. It is downstream from where Black River enters the lake. Black River is the main tributary to Clearwater Lake, entering at Bluff View and exiting through the spillway across from Piedmont Park.

A popular activity here is motoring up into the river to one of the gravel bars. Adults break out the barbecue grills while youngsters play in the crystal clear water. Bluff View is known for its spring run of white bass. The spawn typically occurs during spring turkey season, giving outdoorsmen a chance to bag a gobbler in the morning and catch quite a few white bass in the afternoon. Bass and crappie are popular here too, especially in Goose Creek Bay - the first cove on the east side of the lake down- stream from the boat ramp and marina. Recent installation of hardwood brush piles near Goose Creek make it easy to find a good place to catch fish.

If you don't care to fish, or they are not biting, get up early anyhow. The bluffs face east here, and you'll want to spend some time with coffee cup in hand, looking at the bluffs as the early morning sun lights them. The situation changes later in the day as the bluffs provide shade fairly early on a summer afternoon. Bald eagles can be spotted perched in the trees along the bluffs.

GPS COORDINATES:

Latitude:

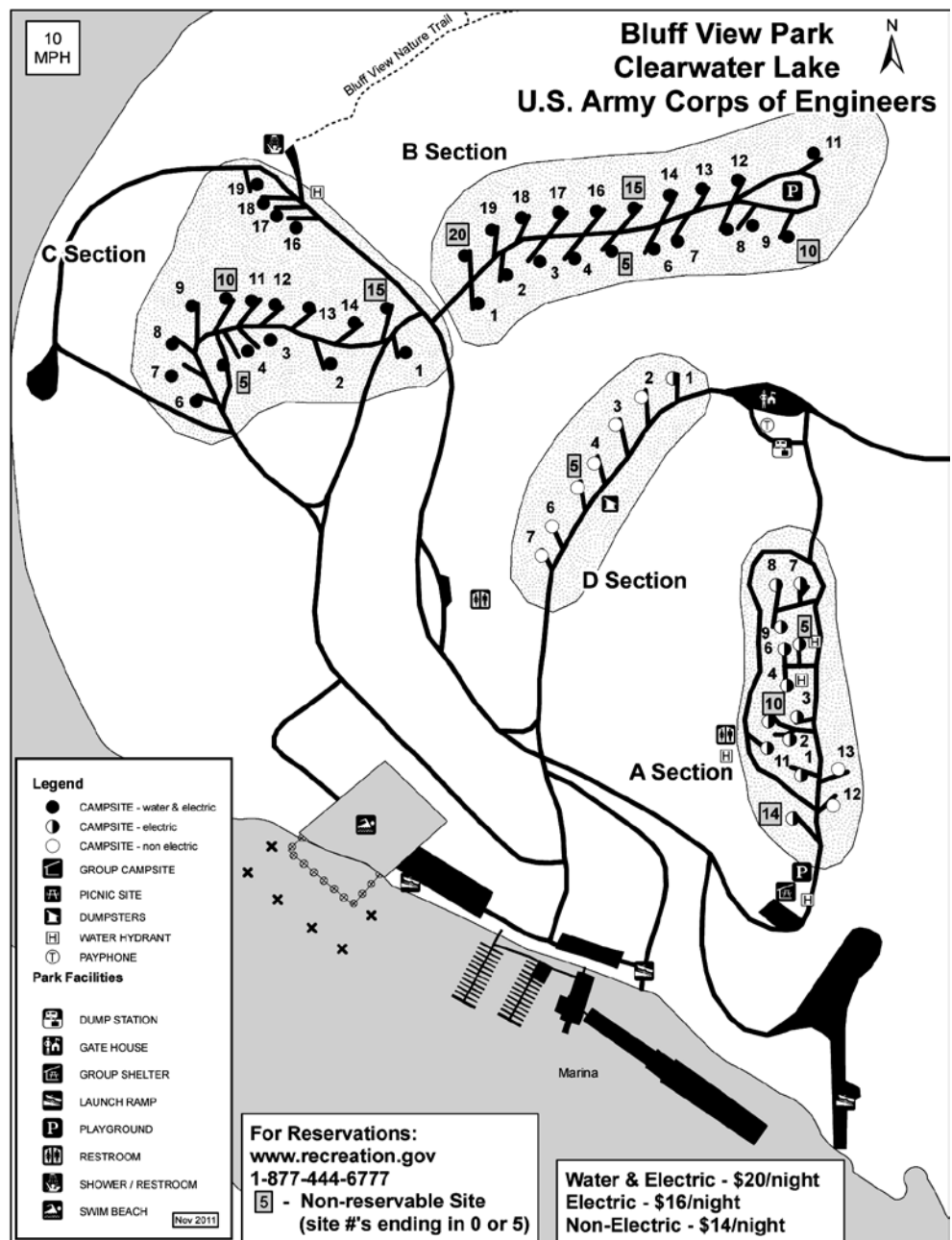
37.1819444

37° 10' 54.9998" N

Longitude:

-90.7894444

90° 47' 21.9998" W



BLUFF VIEW MARINA



www.bluffviewmarina.net

bluffview@windstream.net

Rentals

- Pontoons
- Fishing Boats
- Canoes
- Kayaks
- Water Toys
- Slips

Marina Store

- Tackle
- Ice
- Cold Beer/Soda
- Snacks
- Fuel
- Grill

Bottle Fed Fish!



Come enjoy the fireworks on the lake: 7/6/19



DIRECTIONS: From Piedmont take Hwy 49 north 1 mile, Left on Rt. AA, 7 miles to the end of the road.





Bluff View On The Hill

Modern lodging for Clearwater Lake area:

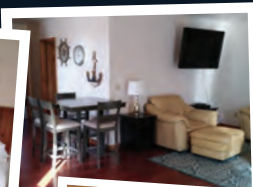
6 kitchenette rooms • 4 cabins

1 house • Banquet room for group parties

JUST ½ MILE FROM CLEARWATER LAKE

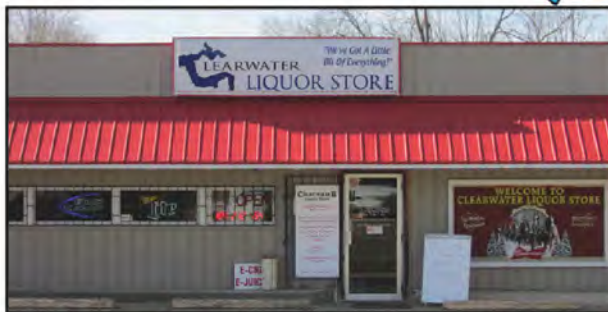
573-223-4445 677 AA Hwy Piedmont, MO 63957

bluffviewonthehill.com bluffviewonthehill@gmail.com



CLEARWATER LIQUOR STORE

(573) 223-7503



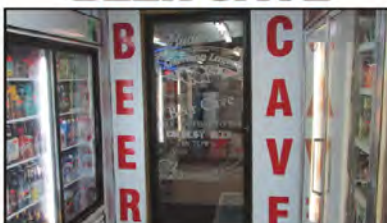
**We carry JBL
Spearguns!**

BEER • LIQUOR • WINE • GUNS & AMMO • HUNTING & FISHING LICENSES • VAPING

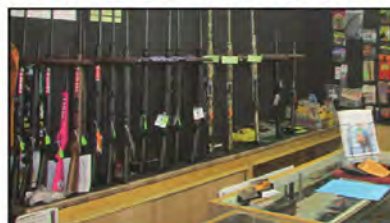
**ENJOY OUR
NEW WINE SECTION**



**SEMO'S LARGEST
BEER CAVE**



**GREAT SELECTION
OF GUNS & AMMO**



PIEDMONT PARK RECREATION AREA

Piedmont Park is the largest campground area on Clearwater Lake and also boasts the largest beach and picnic area. Being adjacent to the dam, visitors to Piedmont Park are afforded views of the main channels leading to the Black River and Webb Creek/Logan Creek arms. To reach Piedmont Park, take Route HH from Piedmont west to the dam, then Lake Road 3 and follow the signs to the camping area.

This area is most popular with pleasure boaters, but when boat traffic is slow, fishermen use this area too. The rocky jetties extending into the lake from the dam attract baitfish and crayfish, which attract gamefish, which attract fishermen. Some hardwood brush piles have been added inside the points, making it even easier for newcomers to figure out where to catch fish. Night fishing has gained in popularity recently along the dam jetties.

Sometimes the lake looks like Christmas in July at night, but with the aroma of barbecue in the air. If you haven't been to Piedmont Park in a year or two, you may be surprised at the recent additions. A new beach, launch ramps and launch ramp parking were added to reduce congestion during busy week-ends and to allow use at higher lake levels. New access roads to these day use facilities and to the marina were constructed to separate traffic from the camping areas; reducing traffic through the camp loops and making it easier for day users to swim, boat or picnic. In response to increased demands of larger trailers, electric service at the sites in Camp Loop B were increased to 50 amp and water.

Piedmont Park Campground offers 97 sites, including many with electric and water hookups. Additional amenities include a dump station, hot showers, picnic shelters, boat ramp, playgrounds and a swimming area.

GPS COORDINATES:

Latitude:

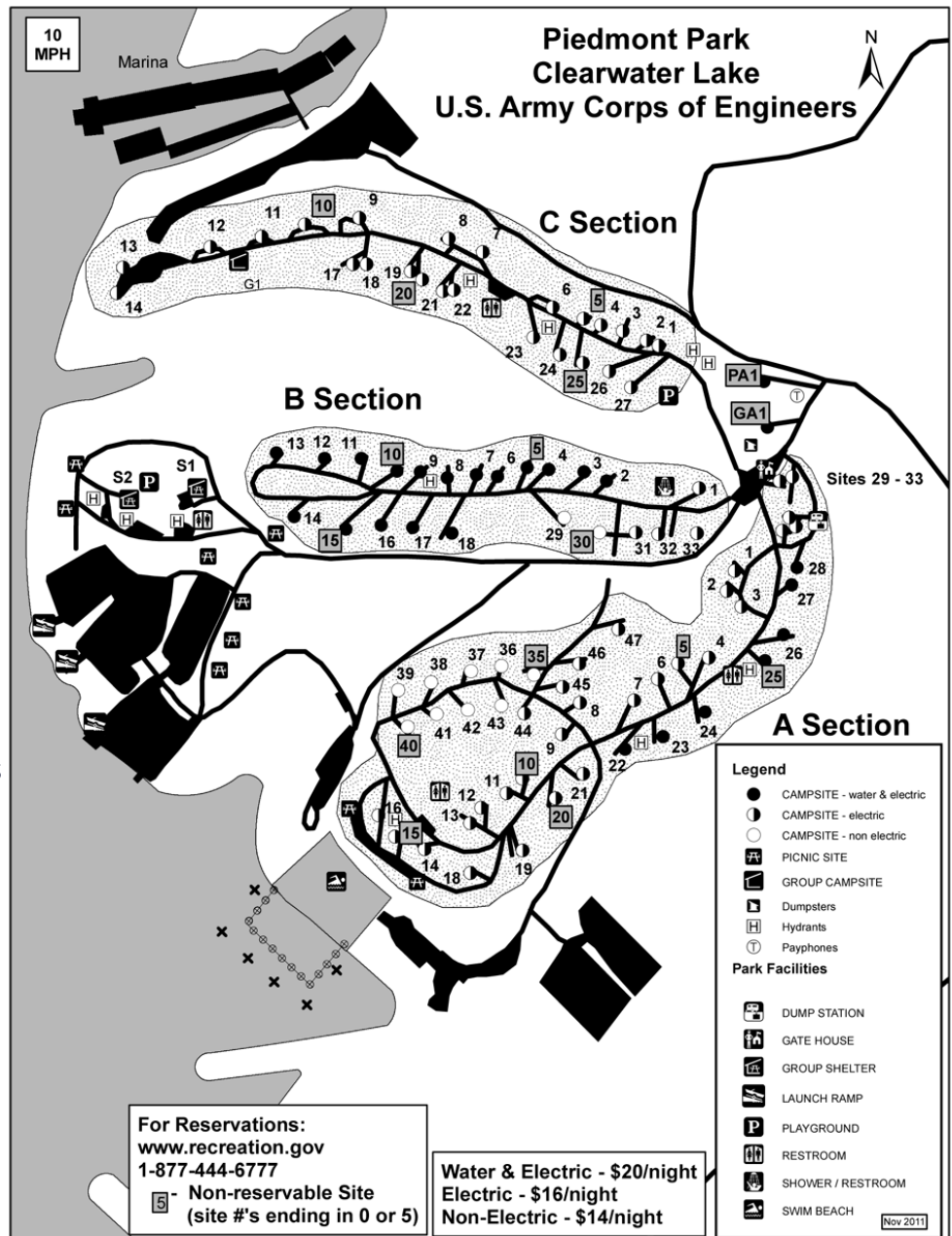
37.1425

37° 8' 33.0000" N

Longitude:

-90.7702778

90° 46' 13.0001" W



RIVER ROAD PARK

River Road Park is situated along both sides of Black River below Clearwater Dam. The east side, or left bank side, runs next to Route HH and is the larger of the two with 113 sites that are mostly water+electric. There are two showers, flush restrooms, a trailer dump station, three day use pavilions, picnic facilities and a three mile hike and bike trail.

There is also a boat ramp into the stilling basin below the dam and a helicopter pad for emergencies that may happen on the project.

The west side, or right bank side, is R Camp Loop and has 14 campsites, nine of which have electric. There are picnic facilities, a vault restroom and an extensive nature trail system designed for viewing wildlife. This trail begins with a wooden boardwalk that winds along and over the Black River.

Visitors can search for wildlife and picturesque landscapes on the Black River Hike and Bike Trail. The trail starts at River Road Park and connects with the Blue Heron and Bottomland interpretive trails. Wildlife includes wetland waterfowl, fox, deer and geese. The lake and river below provide excellent fishing, swimming and canoeing.

River Road Park is open year round with services provided starting March 15 and ending October 31. Dry camping is allowed during the off season period. It is appreciated if all campers remove their trash and keep careful watch on their campfires. No fires are allowed outside of the provided fire rings. To get to River Road Park from Piedmont, take Route HH west, and turn left just below the dam.

All lake campgrounds are open year around, but with services suspended in the off-season.

GPS COORDINATES:

Latitude:

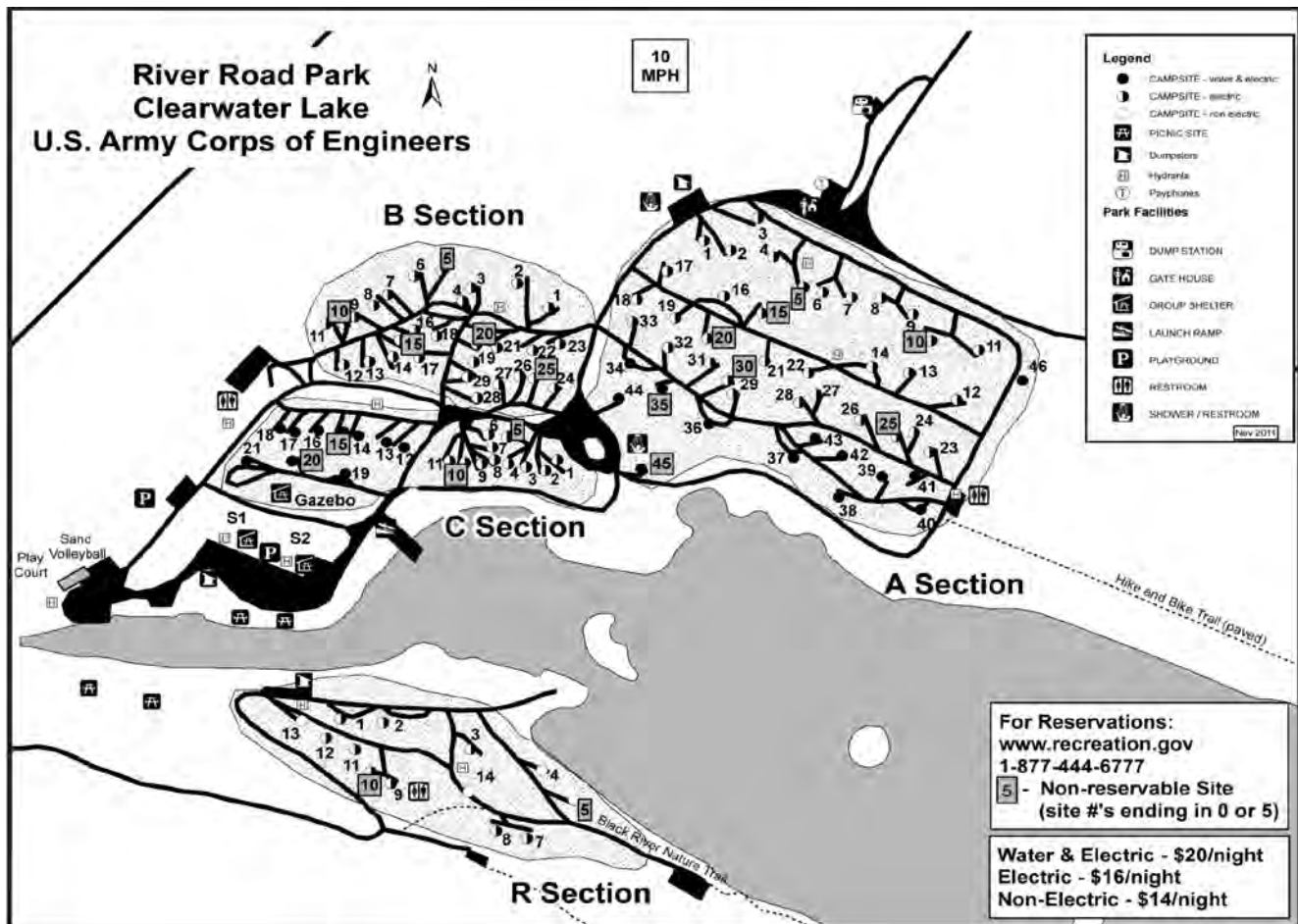
37.133611

37° 8' 1.0000" N

Longitude:

-90.7669444

90° 46' 0.9998" W



KEMPER'S HIDEAWAY RESORT

Rt. 3, Box 3641 Piedmont, MO 63957

FULL RV HOOK-UPS

- Water •Electric
- Sewer •Cable TV

Clearwater
Outboard Motor
Repair

www.kempersresort.com

For RESERVATIONS:

(573) 223-7324



facebook.com/kempershideawayresort

Larry & Tami Drennen / Owners

*1 Mile Below
Clearwater Lake*

- Cabins
- Canoes - Rafts
- RV-Hookups
- Camping
- Wi-Fi
- Boat & Camper Storage

*Fishermen - Hunters
& Family Reunions are
WELCOME!*



On the Beautiful LOWER BLACK RIVER



Fully furnished CLEAN CABINS with KITCHENETTES
and SCREENED PORCHES OVERLOOKING the
BLACK RIVER...HEAT / AIR CONDITIONING & CABLE!!!

CLEARWATER STORE & Cafe

OPEN 7 DAYS! GAS LIQUOR
SPORTING GOODS LIVE BAIT

**1/4 MILE BELOW THE DAM
573.223.4813**

*all you can eat fish special
Friday & Saturday, 12pm-8pm*



**River
Bend STORAGE**

573.223.4813

**BOATS & CAMPERS
Fenced with security**

Yearly rates Covered: \$595
Uncovered: \$250

Monthly rates \$40
(2 month min. - uncovered only)

When you want to rough it (ha-ha) try

The LAST RESORT

Comfortable, fully furnished home in private setting near Ellington.
BBQ grill, picnic table. Close to all local attractions.



For prices and
reservations, call

573-663-3623

Comfort, just minutes from Clearwater Lake and the Scenic Riverways

TOWN & COUNTRY

573-223-4711 | OPEN 7 DAYS

- Bakery & Deli
- Hunting & Fishing Licenses
- Western Union Agent
- UPS Service
- Friendly, courteous service
- Money orders
- Black River Electric & Windstream payment drop-off
- Liberty Utilities Payments
- Pharmacy **NEW!**



Highways HH & 34 Piedmont, MO

SCENIC RIVERS MOTEL

Local Family Owned & Operated

525 N. 2nd St. Ellington, MO 573.663.7722

- 15 Quality, comfortable rooms in the heart of Ellington
- Walking distance to stores and restaurants
- Driving distance to hundreds of outdoor adventures; including the Black River, Clearwater Lake, Current River, and many natural springs & offroad trails

www.FisherFurniture.net

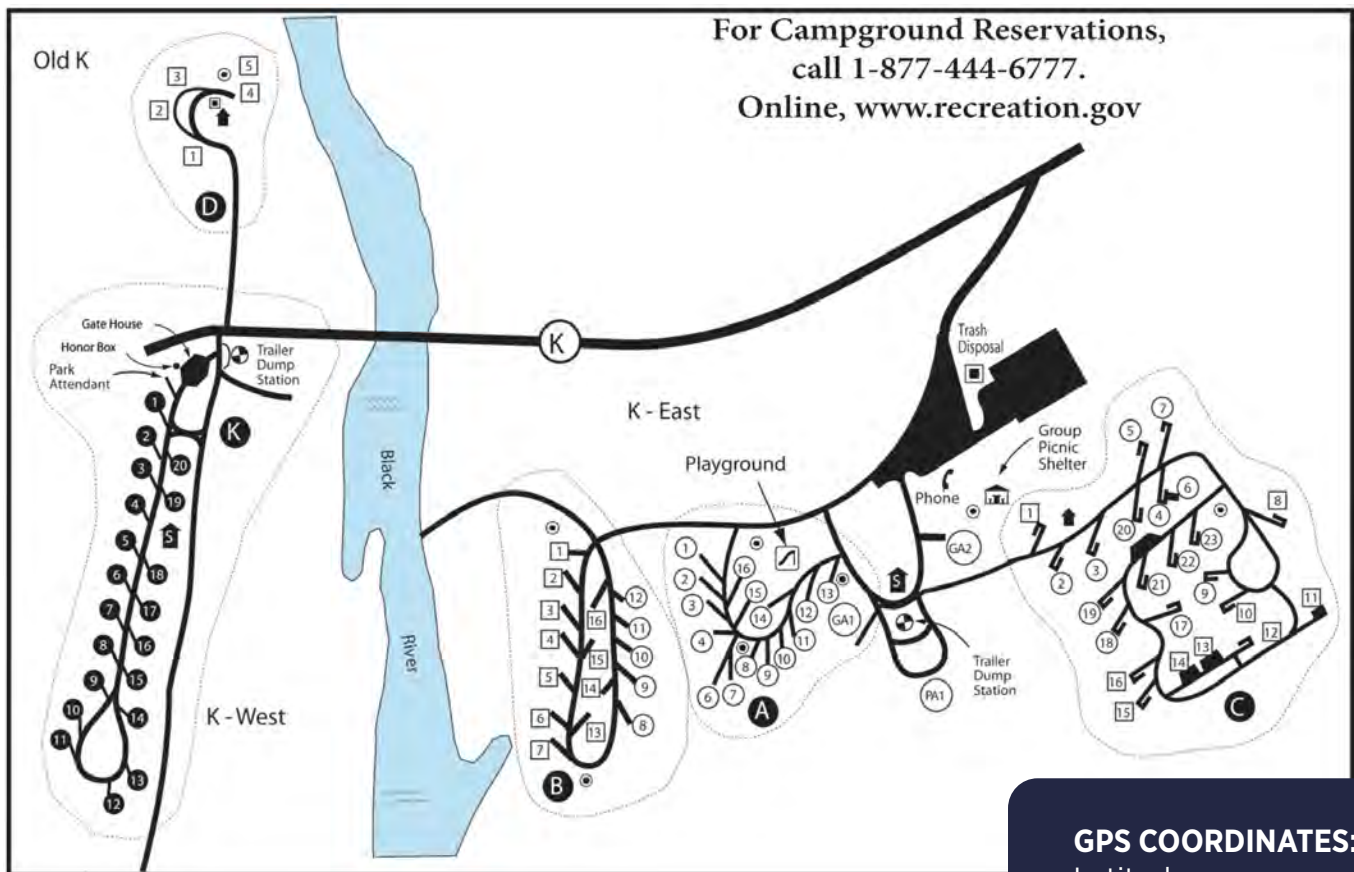
 **Fisher Furniture**

573.546.6111

1400 N. Hwy 21, Ironton, MO 63650



**No Interest
Financing**



GPS COORDINATES:

Latitude:

37.133611

37° 8' 1.0000" N

Longitude:

-90.7669444

90° 46' 0.9998" W

HIGHWAY K RECREATION AREA

Highway K Park is located on Black River well above Clearwater Lake. It is on State Highway K, about midway between Ellington and Annapolis, MO.

This area is unique compared to the rest of the area for the types of recreation offered. With river levels too shallow for speed boats, pontoons or even bass boats, the upper Black River offers crystal clear water that is perfect for canoes, rafts, inner-tubes and kayaks. When summer temperatures climb to the 90's and above, the river also provides a great opportunity for wading and swimming.

The camp on the west side of the river is located above the river valley and sports 50 amp electrical service and water hook-ups at many of the 67 campsites located in the area.

Highway K is popular for having no man-made beaches. Instead, extensive gravel bars provide natural areas for sunbathing, picnics and headquarters for youngsters swimming and playing in the water.

Anglers also have the opportunity to enjoy the river which provides quality smallmouth bass and goggle-eye.

The park is centrally located, just a short drive from some of the state's premier geological and historical points of interest. Not far away are Elephant Rocks State Park, Johnson's Shut-Ins State Park and Taum Sauk Mountain (highest point in Missouri). History buffs can visit Fort Davidson Civil War Historic Site.

Whatever your interests, Highway K offers plenty of recreation opportunities as well as the natural beauty of the Ozarks.

WEBB CREEK RECREATION AREA

Webb Creek Park is located where Webb Creek and Logan Creek come together, on the south-west side of Clearwater Lake. Facilities are on a point on the Webb Creek side of the junction. Webb Creek Campground offers 31 sites, both electric and non-electric. Most of the campsites are located on a wooded hillside and each campsite offers a fire ring and picnic table. Additional amenities include a dump station, showers, boat ramp, playground and a swimming area.

The Webb Creek area is popular for boating and fishing. Located at the junction of two major tributaries, the lake in this area features shallow flats which give this area its' special appeal to fishermen. The water here warms quickest in the spring, attracting crappie and bass during the spawn. Hardwood and cedar fish shelters have been installed to make it easier for newcomers to find where the fish are. The U.S. Army Corps of Engineers and the Missouri Department of Conservation have been placing and refurbishing brush piles in this arm of the lake since 2004.

The campground faces east and views of the lake at sunrise are often spectacular as boats of early morning anglers glide silently through patches of golden fog. There are 31 campsites, most with electric.

To get to Webb Creek from Ellington, go south on MO 21 to Route H, then east to the lake.

GPS COORDINATES:

Latitude:

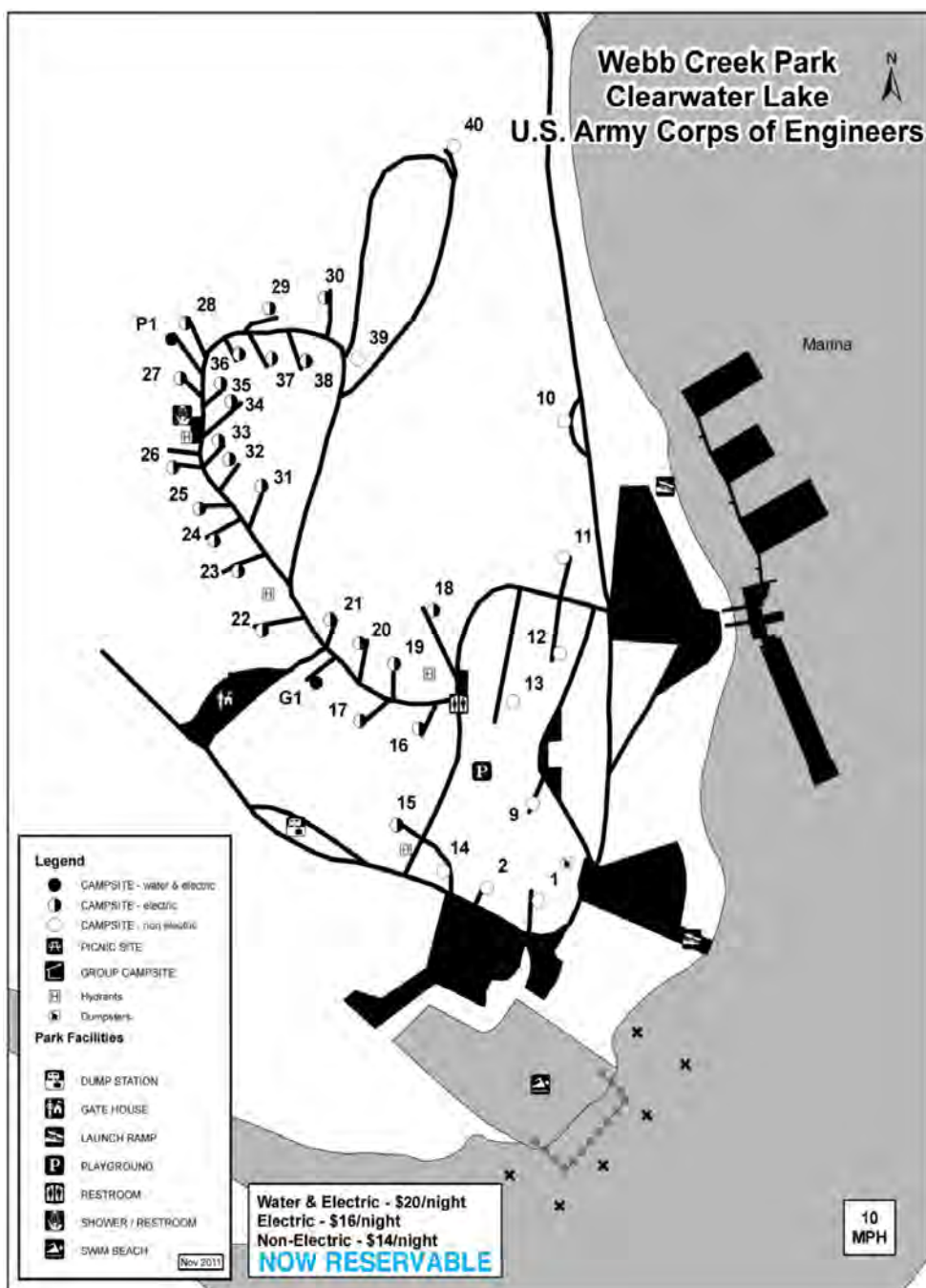
37.1493861

37° 8' 57.7900" N

Longitude:

-90.8081556

90° 48' 29.3602" W





(573) 461-2344

CALL FOR YOUR RESERVATION TODAY!



- **Pontoon, Ski Boat & Wave Runner Rentals**
- **Annual & Daily Slips** • **Campground**
- **Fuel** • **Bait & Tackle** • **Fishing Permits**
- **Snacks & Beverages** • **Ice** • **Cold Beer**



webbcreekmarina.com

MAILING ADDRESS:

P.O. Box 338
Ellington, MO 63638



GPS ADDRESS:

10350 HWY H
Ellington, MO 63638

DON'T GET STUCK ON CLEARWATER LAKE!

Now that you've made it to the sparkling waters of Clearwater Lake, the last thing you need is to find yourself stranded on a "feature" that you might not have been aware of. We all want to have a great time, so, here are a few of the biggest obstacles to be aware of on Clearwater Lake:

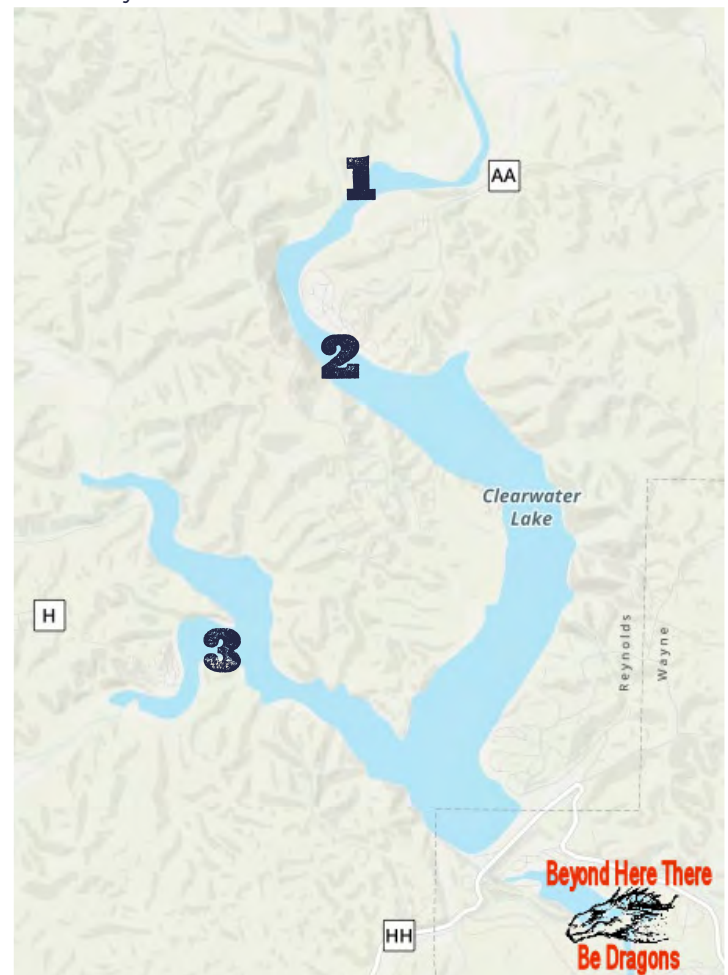
1 BLACK RIVER, UPSTREAM: While it is tempting to head up-river with your boat to enjoy the cooler, spring fed waters in the upper Black River, it might be wiser to enjoy the main body of the lake, unless your boat is equipped properly. The waters north of Bluff View Marina, just past the bluffs, start to get shallow as you start up the Black River. In addition, there are a couple sandbars just beyond the bluffs that will strand your boat, or tear up a prop. Unless your boat has a jet prop or you are VERY familiar with the channel, it is advised to not go past the bluffs north of the marina. Even if you used to run up that river back in your youth, say 20-30 years ago, it is still advisable to steer clear of this area unless your boat has a jet prop – the channel is continually changing its course and may not be where you thought it was.

2 MIDDLE OF LAKE, IN FRONT OF BLUFF VIEW MARINA: As the Black River churns along the bluffs across from Bluff View Marina, it drops sediment in the middle of the lake. Over time, this has resulted in a sandbar developing out in the middle of the lake. You can view the extents of the sand bar by locating the red buoy at the north end and white buoy at the south end, in the middle of the lake. These buoys mark the beginning and end of the sandbar. During the summer the water in that area varies from 3.5' – 6' deep. While it may be tempting to drive across this area, the Lake has another surprise for the unprepared. During floods, trees, logs, rootwads, and other interesting "features" are brought down the Black River. As they enter the lake, where the water channel slows down, these "features" can get deposited on the sandbar. Throughout the summer they tend to migrate down toward the deeper parts of the lake, but, they can be dispersed throughout the sandbar. Thus, it is wise to simply steer clear of the middle of the lake in front of Bluff View Marina – simply drive along the bluffs or along the marina.

3 POINT OUT FROM WEBB CREEK MARINA: In late 2018 there were reports of several boats hitting an obstacle along the point that goes into the main channel by Webb Creek Marina. While it was never determined exactly what was causing the damage, there are at least three unhappy individuals that had to purchase new props. The best guess is that either there's a rock outcropping slightly under the water or the point slowly dives down and boats are hugging the point to close. In either event, the best course is to steer wide around the point in front of Webb Creek Marina and save yourself from having to purchase a new prop.

If you follow these simple suggestions, your trip to Clearwater Lake should be much more uneventful. If you do find a new "feature" that we're not aware of, please let us know so we can add it to the list: clearwaterlake@windstream.net.

Written by Dave Zaloz



The most expensive cushion in the world.

Not wearing it could cost your life.



Nearly 90% of drownings on Corps of Engineers lakes could have been prevented had the victim been wearing a life jacket.



US Army Corps
of Engineers
Little Rock District

Don't sit on it! WEAR it!

www.swl.usace.army.mil
Join us on [facebook](#)

Book your federal campsite with NRRS™

1-877-444-6777



573.223.7060

R & L Marine

rlmarine.net

Custom Built Boats & Jets

Boats

Blazer, Rapture,
Aloha, DuraCraft

Motors


Tohatsu, Honda,
Suzuki

Boating Accessories

Rt 3 Box 3650 Piedmont, Mo 63957
Redwood Acres off Hwy HH

WAYNE COUNTY AUTO PARTS

- Complete Automotive Parts
- Heavy Duty Truck Parts
- Overnight Parts Delivery

 **AUTO PARTS** 573-223-7521

WAYNE COUNTY CAR CARE AND TIRE CENTER

- Complete Automotive Repair
- Complete Line of Auto, Truck & Farm Tires



**AUTOCARE
CENTER**

REGUL
MICHELIN
GOODYEAR
UNIROYAL
DUNLOP
REMINGTON

- Brake Service
- Air conditioning
- Tire Balancing
- Tune-Ups
- Computer Diagnostics
- Computerized Alignment

1010 North Main • Piedmont, MO 63957

573-223-4226



WHAT YOU NEED FOR YOUR BOAT

- The Missouri watercraft registration certificate issued by the Missouri Department of Revenue.
- Outboard motors, regardless of horsepower, (excluding electric trolling motors), are required to have a certificate of title and to be registered with the state of Missouri.
- A Coast Guard approved, wearable life jacket for everyone on board, of the proper size, in good condition and readily accessible. Each person under the age of seven who is on board any watercraft shall wear a personal flotation device which is approved by the United States Coast Guard. This law does not apply when the person under the age of seven is in a part of a watercraft which is fully enclosed, where such enclosure will prevent such person from falling out of or being thrown from the watercraft.
- If your boat is 16 feet or longer, then you are also required to carry a Coast Guard approved throwable device.
- Motorboats shall carry on board at least the following United States Coast Guard approved fire extinguishers:
 1. Every motorboat less than 26' in length, carrying or using gasoline or any other flammable or toxic fluid, one B1 type fire extinguisher;
 2. Every class 2 motorboat, one B2 or two B1 type fire extinguishers;
 3. Every class 3 motorboat:
 - a. Three B1 type fire extinguishers; or
 - b. One B2 type and one B1 type fire extinguisher; or
 - c. A fixed fire extinguishing system and one B2 type fire extinguisher; or
 - d. A fixed fire extinguishing system and two B1 type fire extinguishers.
- All vessels from 16' to 40' shall have a sounding device, such as a horn or a whistle. All vessels over 40' shall have at least a sounding device and one bell.
- Every person born after January 1, 1984, who operates a vessel on the lakes of this state shall possess, on the vessel, a boating safety identification card issued by the Missouri State Highway Patrol or its agent and a photo ID, or a boating safety identification card issued by their home state from a NASBLA approved boating safety course. Missouri residents may also have the boating safety endorsement added to their Missouri driver's license in lieu of carrying the additional card.
- All vessels shall display from sunset to sunrise proper navigational lights when under way, and during such time no other lights, continuous spotlights or docking lights, or other non-prescribed lights shall be exhibited.

Boating handbooks are available at any Missouri License Bureau, online at mswp.dps.missouri.gov, or by request from the Missouri State Water Patrol at 573.751.3333

EMERGENCY CONTACT

Missouri State Highway Patrol
1-800-525-5555 or *55 on a cellular phone
www.mshp.dps.mo.gov or
mshppied@mshp.dps.mo.gov

**CUSTOM BUILT ALL WELDED
ALUMINUM BOATS**

BLAZERsport
573-653-3266
WWW.BLAZERCUSTOMBOATMFG.COM
blazer@mcmo.net
573-653-3266
Often i

Run on waters less traveled with a Blazer Boat

WHAT YOU NEED FOR YOUR PERSONAL WATERCRAFT

- No person shall operate or ride upon a personal watercraft unless each person aboard is wearing a wearable type personal flotation device approved by the United States Coast Guard.
- A person operating a personal watercraft equipped by the manufacturer with a lanyard-type engine cutoff switch shall attach such lanyard to the person's body, clothing, or personal flotation device as appropriate for the specific vessel.
- No person under fourteen years of age shall operate a personal watercraft on the waters of this state, except that a person under fourteen years of age may operate a personal watercraft if a person at least sixteen years of age is aboard the personal watercraft.
- Every personal watercraft shall at all times be operated in a reasonable and prudent manner. Prohibited acts include;
 - Weaving through congested vessel traffic,
 - Jumping the wake of another vessel when visibility around such vessel is obstructed,
 - Becoming airborne or completely leaving the water while crossing the wake of another vessel within one hundred feet of the vessel creating the wake,
 - Operating at a speed in excess of a slow-no wake speed within fifty feet of any vessel or any person in or on the water,
 - Operating at such a speed and proximity to another vessel so as to require the operator to swerve to avoid collision,
- No person shall operate a personal watercraft on any waters of this state for towing a person or persons on water skis, or a surfboard, or similar device unless there is a person on the personal watercraft, in addition to the operator, or an approved ski mirror attached to the personal watercraft, in a position to observe the progress of the person or persons being towed.
- No person who owns or who has control of a personal watercraft shall permit it to be operated in violation of this section.
- Personal watercraft may not be operated between sunset and sunrise unless equipped with proper navigational lights.
- Personal watercraft must have a type B, USCG approved fire extinguisher on board.

WHAT YOU NEED FOR YOUR CANOE OR KAYAK

- Federal law requires a Coast Guard approved, wearable life jacket for everyone onboard, of the proper size, in good condition, and readily accessible. Children under seven years of age must wear a USCG approved PFD at all times on board any vessel.
- A white flashlight or lantern must be displayed between sunset and sunrise and during times of restricted visibility.

Article provided by Missouri State Highway Patrol

port
never duplicated
73-663-3266
often imitated but
er-Boat



Owned and operated by Phil Moss and Calvin Moss

Clearwater Lake Family Resort

HOME OF THE GIANT CATFISH

- Cabins
- RV Sites
- Swimming Pool
- Basketball
- Volleyball
- Horseshoes
- Playground
- Campfires

**YOUR PLACE FOR
FAMILY REUNIONS**

573-223-4521



15 + Beautiful R.V. Sites



**Cabins Include:
A/C, WIFI, AT&T Microcell**



Awesome Playground



**Pool & Kiddy Pool
with Rainmaker Fountain**



www.clearwaterlakeresort.com

CLEARWATER MARINA

(573) 223-7224



Boat Rentals • Souvenirs • Restaurant
WEEKDAY RENTAL SPECIALS!!!

Discover FISHING

Provided by the
Missouri Department of Conservation



KEEP OR RELEASE?

Even before you set out to fish, decide whether you're fishing for fun or fishing for food. This will help you choose gear and get ready to practice good catch-and-release techniques if you're just fishing for fun. Catch-and-release helps fish grow bigger.

If you handle fish carefully before releasing them, they have a good chance of surviving. Released fish can be caught over and over again. They grow large and produce even more fish for our pleasure.

FISHING TIPS

Where to look and how to approach

Many fish are constantly on the move, looking for food. You can either intercept them or wait for them to come to you. If you know you are in a good spot – for example, where you have seen other people catching fish or have caught them yourself- then it might be best to wait for them to return.

Be patient

If you are fishing unfamiliar waters, then it is often wiser to search for good fishing spots. Keep in mind, however, that even the best fishing holes do not produce nonstop action. Patience has always been a virtue among anglers.

Be sneaky

Being quiet is almost as important as being patient. The bigger the fish, the more skittish they are. Commotion on a dock, along the shore or in a boat can scare fish away or cause them to stop feeding. Conversation is fine, but jumping, running or banging equipment will reduce your catch. Think sneaky.

You can usually get closer to fish under cloudy or windy conditions or in flowing water. When trout fishing in streams, wear muted colors and keep a low profile. Try not to let your shadow fall over areas you are fishing.

Stealth also applies to the way you present your bait or lure. Don't cast directly to the spot where you think the fish are. Instead, cast beyond them and reel until your bait or lure is in among the fish.

Learn to recognize a bite

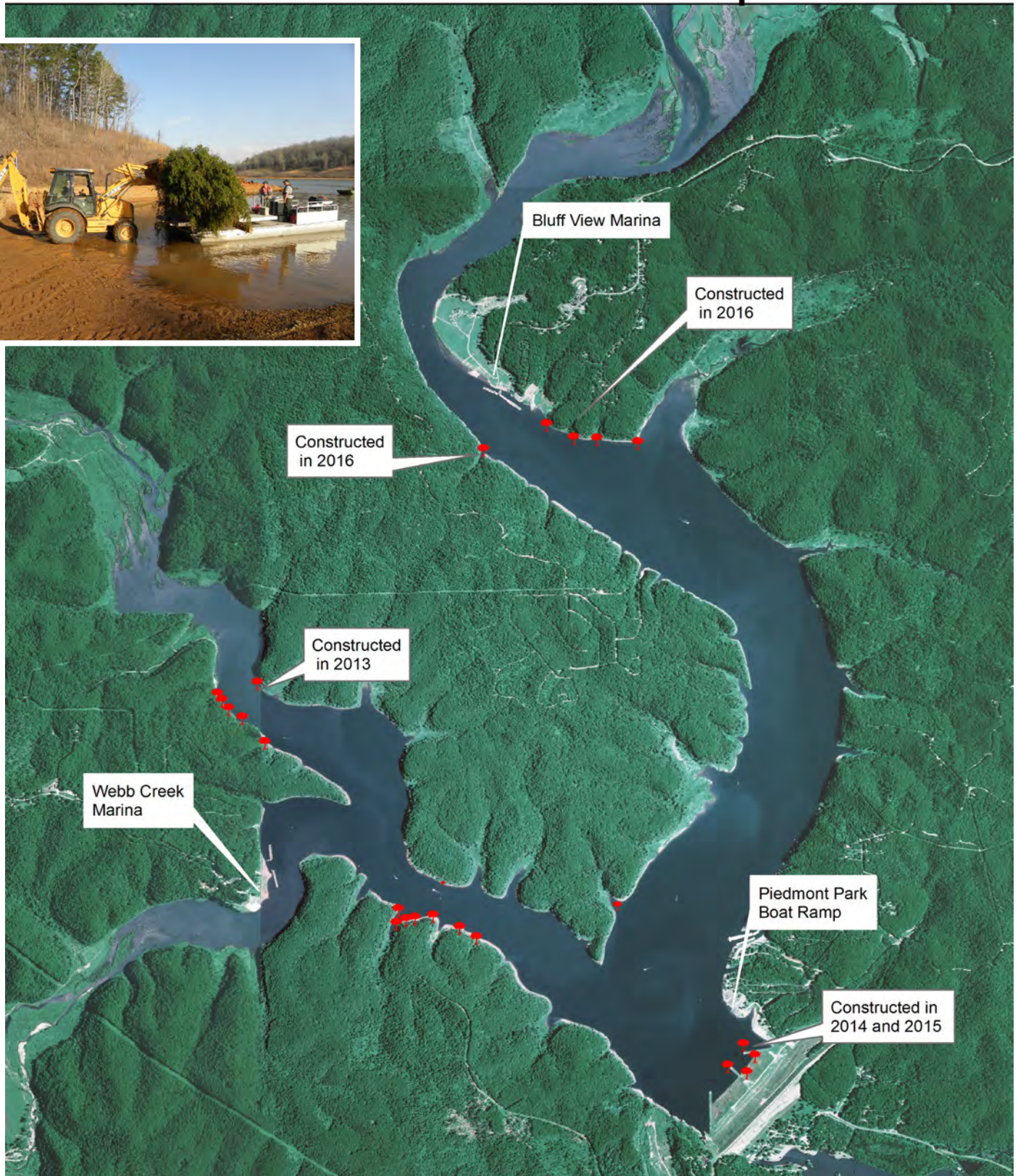
Fish may hit bait or lure ferociously, tentatively or somewhere in between, making it difficult to predict how you may see or feel a bite.

Bobbers could jiggle, plunge downward or skate across the water. If the fish swims upward after taking the bait, your stick bobber may lay flat or float higher in the water.

When bottom fishing, you may see your rod tip plunge downward or quiver, or your line may unexpectedly go slack.

If you are holding your fishing pole, you may feel a tap, a tug or a pull, or the line may go slack.

Clearwater Lake Brushpiles



CLEARWATER LAKE FISHING *Guide*

Fishing opportunities abound in the Clearwater Lake area. The Clearwater Lake area can be divided into three main fishing areas: 1) Black River upstream of Clearwater Lake, 2) Clearwater Lake, and 3) Black River below Clearwater Lake. All three of these areas offer anglers unique fishing opportunities.

BLACK RIVER UPSTREAM OF CLEARWATER LAKE

The Black River upstream of Clearwater Lake is a crystal, clear Ozark stream that supports an excellent smallmouth bass population. While anglers can catch a few largemouth bass and spotted bass (Kentucky bass) in this section of river, smallmouth bass are the most common. Historical electrofishing surveys have shown good numbers of 15"+ smallmouth bass with some fish pushing 20". Shadow bass (goggle-eye) up to 9" are common throughout the river. The river all the way to Lesterville, MO supports good numbers of channel catfish. Anglers should target channel catfish in the large, deep pools. Flathead catfish are also present in the river but in low numbers. In the fall, anglers can gig suckers, which are plentiful throughout the river.

CLEARWATER LAKE

Clearwater Lake supports quality largemouth bass and spotted bass populations. For the past ten years, 30% of the largemouth bass collected during our annual spring electrofishing surveys have been > 15"; which is outstanding. Spotted are not as common as largemouth bass, but fish >14" are present. Clearwater Lake does not have a length limit on black bass.

Anglers have reported that the 2017 and 2018 crappie fishing was some of the best fishing they ever experienced.



RICK'S PAWN
115 N. Main 573.223.4418
Piedmont, MO
GUNS • AMMO • ARCHERY • JEWELRY
Buy, Sell, Trade

Open Daily
5:30 a.m. - 11:00 p.m.
Breakfast - Lunch - Dinner
(573) 223-7484
McDonald's
Piedmont, Missouri



This good fishing was primarily due to excellent gizzard shad spawns (crappie food) during those years. In 2019, white crappie fishing should remain good, with most of fish greater than 9”.

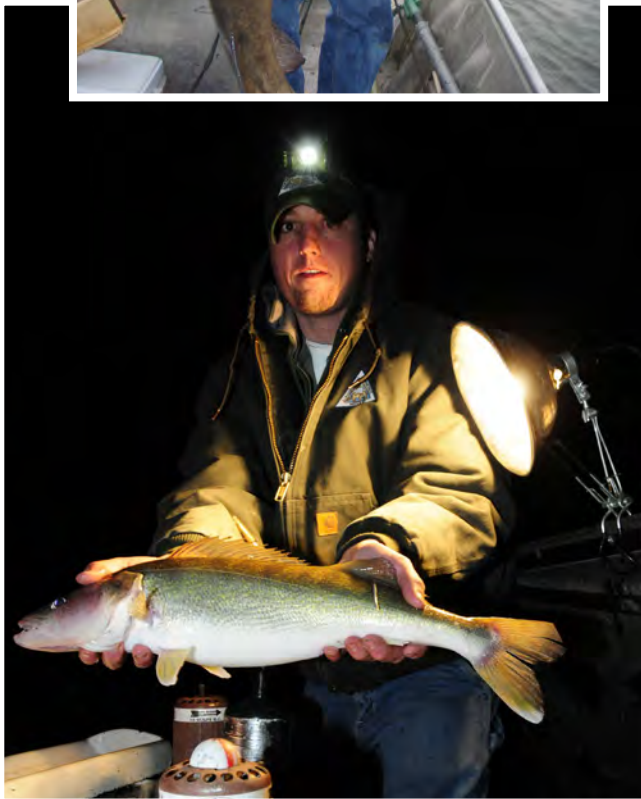
Clearwater Lake supports a good white bass population. In April and early May, white bass migrate up the Black River to spawn; the best fishing is upstream of Webb Creek Marina. White bass of 1-3 pounds are common.

Channel catfish are common, throughout the lake. Flathead catfish are also present in the lake in low numbers. Every year, anglers report catching a few 40-pound flathead catfish.

Each March, the Corps of Engineers and Missouri Department of Conservation staff try to construct large, hardwood brushpiles in the lake. These brushpiles always hold good numbers of bass and crappie. Maps showing the brushpile locations can be obtained by calling the number below.

BLACK RIVER DOWNSTREAM OF CLEARWATER LAKE

The Black River supports an excellent walleye population. During our spring population surveys, most walleye are less than 3 pounds, but we have captured walleye up to 14 pounds. Anglers interested in walleye should fish the river between Hillard Access and the Clearwater Dam. Local anglers fish for walleye primarily during the winter months, but walleye can be caught throughout the year. Spotted bass and largemouth bass are the most numerous of the black basses, but a few smallmouth bass are present in the river. The river supports an excellent channel catfish population, with many fish up to 5 pounds. Flathead catfish are not as abundant as channel catfish, but they do reach good size (40 pounds). The sucker population is excellent. Giggling for suckers should be good late in the season when water clarity improves. During the paddlefish snagging season, anglers have a good opportunity to catch a paddlefish below Clearwater Dam. Paddlefish average between 20 and 35 pounds. Paddlefish anglers are encouraged to report the capture of any jaw banded fish.



For additional information about Clearwater Lake or the Black River, please contact:

Paul Cieslewicz- Fisheries Biologist
MO Dept. of Conservation
2302 County Park Drive
Cape Girardeau, MO 63701
(573) 290-5730
Paul.Cieslewicz@mdc.mo.gov

Eat LOCAL

Written by
Sarah Sadler

Swing by one of the Farmers Markets, the local farm stand, or the butcher shop on your way to camp for locally grown produce, homemade goods, and fresh cut steaks to throw on the grill.

Both Piedmont and Ellington host a seasonal Farmers market with various goods. Vendors sell fresh fruits and vegetables, plants and flowers, jams and jellies, baked goods, and handcrafted and homemade items.



Dredge your crappie fillets in flour or your favorite cornmeal breading for a crowd pleasing Southern-style dinner.

**SHOW OFF YOUR
MORNING
CATCH,
HAVE A
FISH FRY!**

LOOKING FOR A FUN, FAMILY-FRIENDLY ACTIVITY?

Try Geocaching!

Pronounced “gee-oh-cash-ing”

Article written by Sarah Sadler

Caches are hidden all over the world by geocachers who put together items, such as trinkets, logbooks, or small toys. These items are then put into a weatherproof box or container and hidden under a rock or behind a tree or sign at a designated location. The geographical coordinates of these containers are posted on sites such as geocaching.com and shared for other people to find. There are six of these treasures hidden near Clearwater Lake -- and several more within a short distance away!

Geocaching makes a great family activity. The location sites range from easy to challenging, so the level of difficulty is indicated on the website along with the cache's coordinates. Part of the fun is deciding how you get to the location, so you will need a map to determine the best route. A phone, compass, or a more precise GPS unit may also be helpful, but aren't required. Some caches are more obvious

Clearwater Lake Dining

Whether you are on the lake, cruising around the local towns, or just passing through, the Clearwater Lake area has plenty of places to stop and fulfill your appetite.

American Legion Post 281

121 Legion Park Road
Piedmont, Mo
573.223.4382

The nation's largest Veterans service organization. Dinners and events are scheduled throughout the year.

Clearwater Marina

905 County Road 418
Piedmont, Mo
573.223.7224

Walk up the gangplank from the king lot or pull your boat up the dock for a quick bite to eat or hand dipped ice cream.

Piedmont Gas Mart

523 S. Main Street
Piedmont, Mo
573.223.2323

A full service convenience store, offering Chester's Chicken and Hunt Brothers Pizza.

Arcadia Sporting Goods

Jct. Hwy 21 & 72
Arcadia, Mo
573.546.7616

Call today to place your Hunts Brothers Pizza order. All toppings for no extra charge!

Clearwater Store & Cafe'

State Hwy HH
Piedmont, Mo
573.223.4813

A family run business serving American favorites, including all-you-can-eat fish weekend specials.

Piedmont Processing

State Hwy HH
Piedmont, Mo
573.223.4950

Specializing in fresh meats cut to perfection. Customer favorites include bacon wrapped filets, summer sausage, jerky, ham salad, and smoked meats.

Bluff View Marina

93 Hwy AA
Piedmont, Mo
573.223.4849

Grab a pizza or burger at the Bluff View Grill before, during, or after your day at the lake.

Gracie Mae's

Old State Hwy 34, County Rd 312
Patterson, Mo
573.856.4131

Located inside Southern Memories. Serving a lunch menu of specialty sandwiches, salads and desserts.

Robbi's Zephyr Cafe'

907 N. Main Street
Piedmont, Mo
573.223.2400

Local, family owned eatery serving Southern classics in a relaxed and welcoming atmosphere.

Casey's General Store

1104 S. Main Street
Piedmont, Mo
573.223.2740

Your hometown convenience store with made-from-scratch pizza, coffee, donuts, & sandwiches.

McDonald's

1020 S. Main Street
Piedmont, Mo
573.223.7484

Newly remodeled and ready to serve. Stop in for All Day Breakfast, a Signature Crafted Burger, or a delicious McCafe coffee.

Tequila's Mexican Restaurant

216 Piedmont Ave
Piedmont, Mo
573.223.2075

authentic Mexican cuisine a great drink selection. Carry out available.

Centerville Quick Stop

134 Hwy V
Centerville, Mo
573.648.2201

Offering daily meal specials, roaster Fried Chicken, and made to order pizza.

Piedmont Eagles Lodge

Hwy 34 East
Piedmont, Mo
573.223.2233

Helping the local community since 1989. Contact the Lodge for planned dinners and events.

Town & Country Supermarket

7 Hal's Plaza Drive
Piedmont, Mo
573.223.4711

Pick up a hot meal or cold cuts; the perfect combination of convenience and quality.


than others, but some can be pretty tricky. Most are placed in a way so it's unnoticeable to the unaware, yet can be accessed without harming terrain or vegetation.

Visit geocaching.com to get started on your journey!

What else to Bring

- Flashlight
- Water bottle
- Cell phone or camera
- First-aid kit
- Insect repellent and sunscreen
- Notebook and pen to record your finds
- Cache treasures to leave behind

Southern Memories
ANTIQUE'S
VINTAGE FURNITURE
PATTERSON, MO
VISIT OUR UNIQUE BOOTHS & STORE
(573) 856-4131
TRY GRACIE MAE'S FOR LUNCH



We tend to move a bit slower down here at Clearwater Lake. Can't quite put my hand on it, but, it just seems to be the natural mode of operation –

SLOOOOOOWWW DOWN.

Written by
Dave Zaloz

Maybe it's when visitors drive around the lake they are taking notice of some unique situations that they don't normally see in the hustle and bustle of the larger communities. Like the budding trees in early spring, as the landscape shakes off the droll, grey of winter and enfolds us in the burst of spring color. Or the dogwood trees going full bloom to herald the turning of the seasons. I'm going to stake a bet that it's probably the abundance of deer that seem to want to get to the other side of the road. That tends to make folks move a bit slower down here at Clearwater Lake. You might call the deer our traffic control brigade.

Once you're on Clearwater Lake, you come to realize that you don't need a big fancy boat and motor. The lake is sized just right for smaller (and possibly slower) boats to capture the sights on the lake in a full day without really having to go very far. Like watching the bald eagles that soar over the hills from Webb Creek to the Black River bluffs. Or the fishermen pulling their catches off the rock berms down by the dam and Clearwater Marina. Maybe a gentle cruise along the Chimney Rocks does the trick. In any event, there's no rush, which means folks tend to move a bit slower down here at Clearwater Lake.

Now the only time folks tend to move a bit faster down here at Clearwater Lake is when they're screaming down highway 67 to turn on 34 and head to Piedmont and Clearwater Lake. But, do you blame them – look at what they're missing until they get here.



Dale Bearden
BROKER

BUS. 573-223-2769
RES. 573-223-7011

311 Piedmont Ave.
Piedmont, MO 63957

Website: heartlandrealty.net



(573) 223-4267

(800) 279-7154

Monday - Friday 7:00 a.m. - 5:00 p.m. / Saturday 8:00 a.m. - 1:00 p.m.

125 E. Elm Street, Piedmont, Missouri 63957

**MORRISON-
WORLEY**

FUNERAL CHAPEL, INC.

**100 Piedmont Ave.
Piedmont, MO 63957**

Phone: (573) 223-2625

Info Line: (573) 223-7699



MONUMENTS
PRE ARRANGEMENTS
INSURANCE

morrisonworleychapel.com

Greenville Chapel

**114 Sycamore St.
Greenville, MO 63944**



ARCADIA SPORTING GOODS

1900 GUNS IN STOCK

BUY, SELL, OR TRADE

& LAYAWAY (10% DOWN, 90 DAYS)

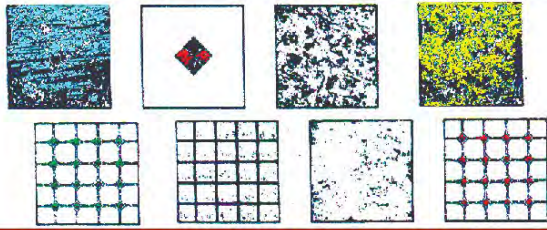
**GAS - SNACK BAR - LIQUOR
WINE - BEER - GIFT SHOP
AREA'S NO. 1 HUNTING HEADQUARTERS**

**WE OFFER LARGEST SELECTION OF
HUNTING, FISHING,
CAMPING GEAR AND SUPPLIES**



**Jct. Hwy 21&72, Arcadia, Mo
573-546-7616**

YOU'LL BE FLOORED



BY OUR QUALITY, PRICE & SELECTION

Don't buy flooring until you check with us.

- Carpet • Vinyl • Laminate • Ceramic
- Hardwood Flooring • Beautiful Area Rugs

CLEARWATER FLOOR COVERING CENTER

Hwy HH - Piedmont

573-223-4766

We also Have Marine Carpet.

30 Years Experience

MEDICAL CENTER PHARMACY

A Professional Pharmacy

DURABLE MEDICAL EQUIPMENT

Highway 34 & Canyon Club Road
P.O. Box 278
Piedmont, MO 63957

Phone: 573-223-4235

Fax: 573-223-4184

Email: pharmacy@semo.net

www.medctrpharmacy.com

Gene's Towing & Recovery



"Our business is a wreck."

**Towing & Roadside Assistance
Available 24 Hours**



573-856-4536 or 573-776-8863 • Patterson, Mo.



Clark's Mountain Nursing Center

skilled nursing by Americare

(573) 223-4297

2100 Barnes St

Piedmont, Missouri

RUEGG FUNERAL HOMES, INC.

Established
in 1933

Business: 223-4242
Residence: 223-7671

**321 N. Main St.
Piedmont, Missouri 63957**

For Obituary Service Information Call:

(573) 223-7444 (Piedmont)

(573) 224-5451 (Greenville)

- Monuments • Pre Arranged Funerals
- Caring Personal Service

• PIEDMONT • GREENVILLE • WILLIAMSVILLE

**JAMES M. RUEGG
FRANCES E. RUEGG
ALEX RUEGG**



BLACK RIVER CLEAN UP

Written by Doug Geist

In June of 2018 the League of Watershed Guardians, an association of 15 Missouri Stream Team's from St. Louis and Jefferson County joined forces with the Clearwater Lake Corps of Engineers, the Missouri Department of Conservation and the Department of Natural Resources for their second clean-up on the Black River. The volunteers were able to remove over 15-cubic yards of trash before excessive heat brought the clean-up efforts to an early end. In October of 2017 they had removed over 80 cubic yards of litter over two days.

"It has been a great honor and a great time working with people from the Piedmont area and we are hopeful a local Stream Team will form and continue taking care of the Black River" said Doug Geist President of the League of Watershed Guardians. Geist also said, "Stream Teams are made up of volunteers with a passion for Missouri Streams and having fun. Keeping a stream clean and healthy makes it a safe and fun for recreation for local residents and guests that come here for vacations." For information about forming a stream Team and how to volunteer go to www.mostreamteam.org or call 1-800-781-1989.




**BAREFOOT
VILLAGE**

FIREWORKS

(573) 783-4116

Fredericktown • Piedmont

573-223-4246

BUILDING SOLUTIONS

@mobuildings



County Rd 309 - Silva, MO 63964

SHEDS, CABINS, LOFTED BARNs, GARAGES, & CARPORTS

PACK YOUR HIKING SHOES

and set off on a hiking adventure at Clearwater Lake!

Written by Sarah Sadler

With Recreation and Conservation Areas, State and National Parks, and a 350+ mile nature trail, we have it all right here!



The Bluff View Nature Trail is a .6-mile hike that offers a picturesque view of Clearwater Lake and the Black River valley. The trail is rated moderate in difficulty and is a foot trail only. The trailhead is located in C-section of Bluff View Park.

The Black River Nature Trail, Bottom Land Nature Trail, and the Blue Heron Slough Trail are all part of a series of trails in River Road Park that wind through the Watchable Wildlife Area. The trails vary in length and are all rated as moderate. They wind their way through the hilltop woods and the bottomlands alongside the Black River. Several locations provide benches to rest and lookout platforms for a bird's eye view of the river.

Tucked away in Piedmont is **Lon Sanders Canyon Conservation Area**. The 130 acre area. Stone-lined trails, staircases, pillars, a trellis, decorative well and two dams are what still stand of a resort that never materialized. With a trail distance of just over one mile it isn't a long hike, but it is well worth the visit.



No job too small

Call for free estimate

HUFF ELECTRIC

Generator Installation & Service

Insured • Work Guaranteed

BILL HUFF
OWNER

Shop: 573-223-2472
Cell: 573-778-6387



Once a lumber mill, **Markham Spring** is now a Recreation Area featuring a historic stone house, six springs and four hiking trails. The park's river bluffs provide an impressive view of the Black River along the Eagle Bluff Trail. The two mile trail winds along the river and loops back to the campground.

With thousands of acres of pristine scenery, **Sam A. Baker State Park** offers some of Missouri's most breathtaking surroundings. Hikers can tackle one of the park's numerous trails that vary in difficulty and length. Ideal for a quick stroll, a vigorous day hike, or a multi-day backpacking trip, this park has something for everyone. Visit mostateparks.com for trail maps and information.

Trails offering scenic overlooks, wooded ridgetops with panoramic views, igneous and chert forests, dolomite glades, dark bottomland forested hollows, numerous springs, and igneous rock "shut-ins" that channel spring-fed crystal clear waters over massive boulders---that bring the hiker through the best of what the Ozarks has to offer is known as the **Ozark Trail**. The 350+ miles of trail runs from Crawford County south through the Ozark Plateau. With spurs that lead to different areas within the **Ozark National Scenic Riverways**, there is much to explore. Detailed maps of each OT section can be downloaded from the Ozark Trail Association website.

PLUMBING

MIKE MASSA Sr
 30 years experience mikemassasr@gmail.com

(856) 325-7878 Located in Piedmont - Servicing Wayne, Bollinger, Butler, Carter, Iron, Madison, and Reynolds Counties.

Repair, Install, Replace... Water Heater, Toilet, Shower, Bath Tub, Sink, Gas Piping, Sump Pump, Garbage Disposal.
 Also experienced in Bathroom remodels.

Burton Well Drilling

Residential & Commercial
 Water Well Drilling
 Irrigation Drilling

573-945-2202

Richard Burton
 Rt. 2, Box 238
 Ellington, Missouri 63638
"In Business Since 1948"



Head west for a self guided elk driving tour through Peck Ranch and/or Current River Conservation Area. Both parks are open from sunrise to sunset seven days a week (Peck Ranch does close during managed deer hunts and fall firearms deer season, check the MDC website for more information). Both tours take you on a beautiful drive through fields, forests, and glades, where you can see elk, deer, bald eagles and other wildlife. The best time to see elk is right after sunrise or right before sunset. Guests are welcome to take photographs — but please do not disturb the wildlife. For more information on elk or other area wildlife, visit the Twin Pines Conservation Education Center on Highway 60 or visit nature.mdc.mo.gov/discover-nature/activities/driving-tours/elk-driving-tours.

For those that prefer to take their scenic ride off-road, Clearwater Lake is surrounded by the beautiful public lands of the Mark Twain National Forest. There are 750 miles of trails in the National Forest that are designated for hiking, equestrian, mountain biking, and motorized use. More than 78,000 acres can only be accessed by hiking, horseback, or mountain bike, and another 265,000 acres for motorized recreation. The trails vary in length and difficulty, but there is sure to be something for everyone. Maps and area-specific information can be found at www.fs.usda.gov/mtnf. For county permit requirements and OHV regulations contact the Poplar Bluff U.S. Forest Service Ranger Station at 573.785.1475.



Missouri is also home of 350 miles of the TransAmerica Trail, also known as U.S. Bicycle Route 76. The 4200 + mile cross-country trail runs from Virginia to Oregon and travels through Ellington along Highways 21 and 106. With hostel arrangements made through the Ellington Chamber of Commerce, cyclist are able to stay overnight at The Route 76 Bicycle Inn near the pavilion on Main Street.

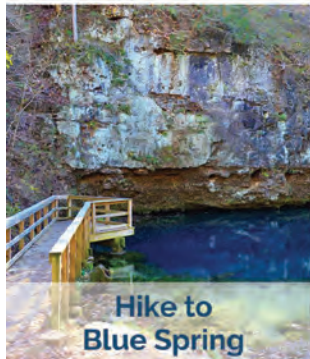
Viewing nature from horseback provides yet another perspective and Clearwater Lake is blessed to be surrounded by several equestrian trails. Along with the Mark Twain National Forest, riding horseback along the Sam A. Baker State Park trails is a local favorite. Tours of the area can be arranged with local guides, such as Starners Stables of Patterson.

JUMP ON IN

EXPERIENCE ELLINGTON



Outdoor fun at
Clearwater Lake &
Webb Creek Park



Hike to
Blue Spring



Ride through
off road trails



Camp at
Clearwater Lake,
Current River, or
Black River



Float Current
or Black Rivers

Visit **ELLINGTONMO.COM** for all activities!

MAY 4

RIDING THE OZARKS UTV RIDE

JULY 4

FIREWORK DISPLAY
JUNCTION HWY 21 & 106

**JUNE-
SEPT**

FARMERS MARKET
2ND & 4TH SATURDAY(S)

**SEPT
26-28**

REYNOLDS COUNTY FAIR

JUNE TBA

OUTDOOR CONCERT
AT BARN AT THE HAMPTONS

OCT 12

MYSTERY UTV RIDE

WEBB CREEK PARK CAMPING ACTIVITIES :

OL' TIME STORY TELLING - SAT. EVENINGS | FUN ACTIVITIES FOR YOUNG CAMPERS | WEBB CREEK MARINA EVENTS

Contact Ellington Chamber Of Commerce
For event info follow our page or www.ellingtonmo.com

Funding for this advertising
provided by the
Taum Sauk Fund Inc.

Over One Hundred Years of Friendly Professional Service!



In 1902, First Midwest Bank of Piedmont opened its doors for business in Piedmont.

Today, we're proud to be a leading financial institution in the area. We're equally proud that our leadership was built on principle; on a strict adherence to honest, sound, community sensitive banking.

Come share the heritage. . . Bank from strength. . . from a rich tradition of sound and solid banking.

FIRST MIDWEST BANK



*1025 S Main,
Piedmont, MO*

Phone 573-223-4215

PO Box 398, Piedmont, MO

*Highway A, White Oak
Williamsville*

Phone 573-998-2833

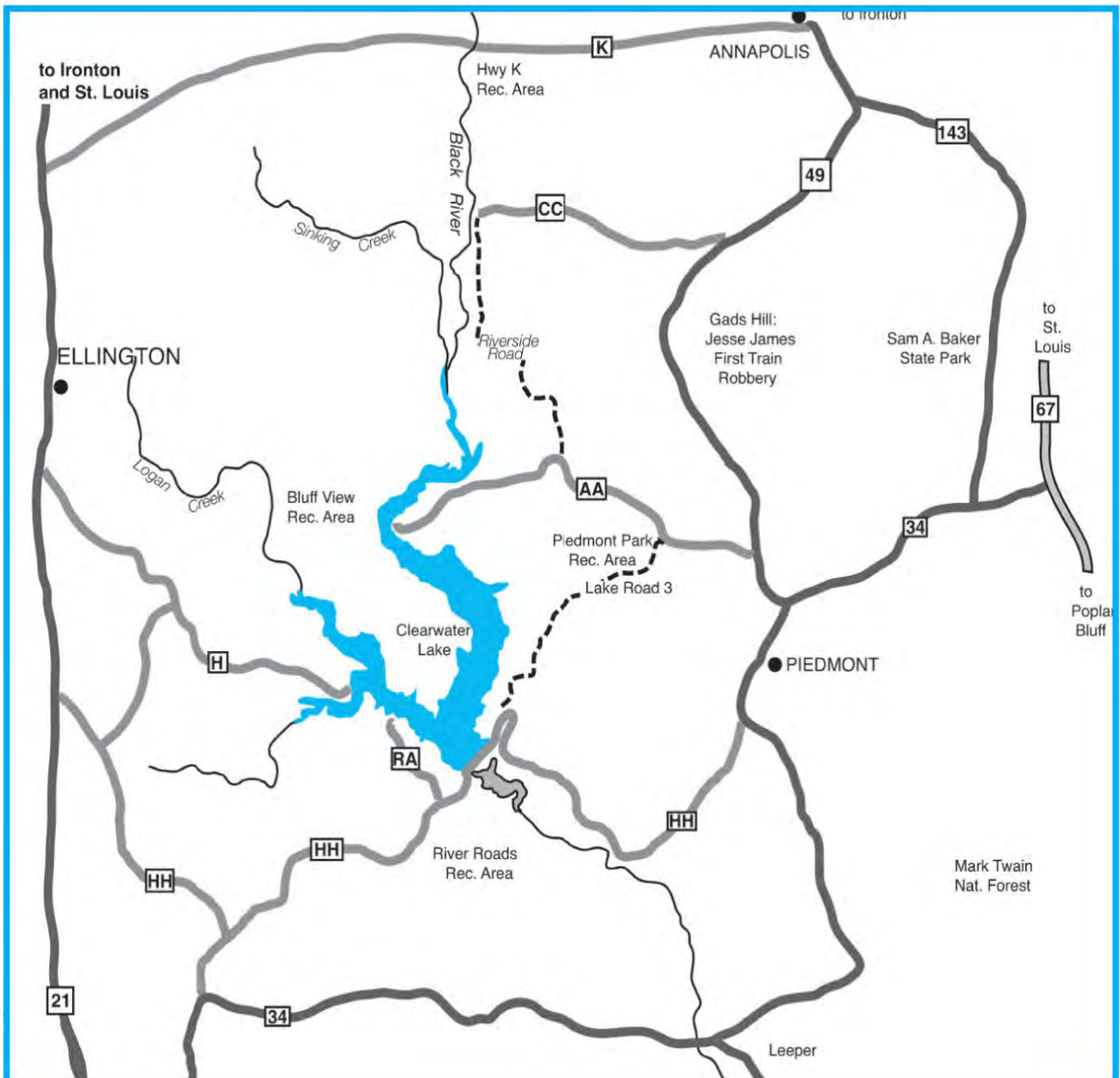
*115 Front Street
Greenville, MO*

Phone 573-224-5533

*201 St. John St.
Van Buren, MO*

Phone 573-323-4246

COMMUNITIES OF CLEARWATER LAKE	
Piedmont Area Chamber of Commerce P.O. Box 101 Piedmont, MO 63957 573.223.4046 chamberofcommerce@boycomonline.com	Ellington Chamber of Commerce P.O. Box 515 Ellington, MO 63638 573.663.7997 chamber@ellingtonmo.com
www.visitpiedmontmo.com	www.ellingtonmo.com



"BRINGING FAMILIES HOME"



NATHAN MAURER
Broker Officer



JACKIE ROBISON
Office Manager



MALLORY ROBERTSON
Admin Assistant



CHERYL WILSON
Closing Agent

573.785.7600



WWW.POPLARBLUFFREALTYINC.COM

FACEBOOK.COM

REALTOR.COM

ZILLOW.COM

Coming together is a
BEGINNING

Growing together is
PROGRESS

Working together is
SUCCESS



RICK BRITTINGHAM
718.7786



TERRY STEWART
778.6831



KURT KNODELL
718.6399



RHENDA HUTCHISON
776.5555



KIM KING
429.9200



GARY FEATHERSTON
776.4026



STEVE JOHNSON
429.3685



BILL DEE
776.0196



SHAWN ADAMS
714.5973



BEN CRAIG
707.4172



TRACI BARBOUR
718.8859



GREG WISEMEN
772.2394



CARLA HICKS
714.2803



RYAN BRITTINGHAM
718.6594



RONNIE CLINE
776.3129



BRENDA HOLMES
707.0741



PATRICK KRISHNA
429.2073



CHELSEA CASH
714.1579



CHARLENA DORRIS
718.3207



QUENTIN DUFF
776.0008



TODD HENSON
300.1707



CODY ADAMS
300.3235



SARA PULLIAM
718.7909



BRENT DAVIS
429.0416



LUCY WHEELER
429.3243



ERIC ARNOLD
429.0758



PAUL ARNOLD
776.0078

CALL ONE OF OUR
PROFESSIONAL
ASSOCIATES TO HELP
WITH ALL OF YOUR
REAL ESTATE NEEDS!

1800 N. Westwood Blvd., Poplar Bluff, MO 63901

573.785.7600



1205 Walnut Street, Doniphan, MO 63935

573.996.5153



Emergency? Dial 911!

Emergency calls within the area will be answered by a trained public safety dispatcher.

Calls to 911 should be for medical, fire, or safety emergencies only. For non-emergencies use the following agency numbers.

State Wide:

U.S. Army Corps of Engineers	573.223.7777
MO Department of Conservation	573.223.4525
MO Highway and Water Patrol	800.525.5555 or *55
U.S. Forest Service Ranger Station	573.785.1475
Black River Electric	800.392.4711
Road Conditions	888.ASK.MODOT
Missouri Fishing License	800.392.4115

Wayne County:

Wayne County Sheriff	573.224.3090
Piedmont Police	573.223.4300
Clearwater Ambulance	573.223.4111
Piedmont Fire	573.223.4222
Mill Spring Fire	573.223.2122
Williamsville Fire	573.998.2300
Piedmont Forest Fire	573.223.4525

Reynolds County:

Reynolds County Sheriff	573.648.2491
Ellington Police	573.663.7717
Ellington Fire	573.663.2323
Webb Creek Fire	573.461.2424
Garwood Fire Dept.	573.945.2424
Logan Creek Fire	573.996.7123
Ellington Forest Fire	573.663.7130

The following service providers can meet your primary needs in the Clearwater area.

We truly appreciate your business and we're proud to offer many of the services you'll need near the lake.

Banking:

First Midwest Bank of the Ozarks	
1025 S. Main Piedmont	573.223.4215
Hwy A, Williamsville	573.998.2833
115 Front St, Greenville	573.224.5533
Peoples Community Bank	
1401 N Main, Piedmont	573.223.4000
700 Hwy 21, Ellington	573.663.2295
101 Sycamore, Greenville	573.224.3267
3529 S Westwood, Poplar Bluff	573.686.3800
200 E. 2nd St, Annapolis	573.598.1323

Boat/RV/Automotive:

Ernie's Sales & Service	573.461.2244
9401 Hwy H, Ellington	
Blazer Boats	573.663.3266
160 County Road 602A, Ellington	
R&L Marine	573.223.7060
Rt. 3 Box 3650, Piedmont	
Forshee Towing	573.598.3409
51294 Hwy 49, Annapolis	

Medical:

Piedmont Physician Associates	573.223.4233
Rt 4 Box 4515, Piedmont	
Piedmont Family Clinic	573.223.4800
1 Hal's Plaza, Piedmont	
Ellington Family Clinic	573.663.2525
61 Hwy Y, Ellington	
Poplar Bluff Regional Medical Ctr	573.785.7721
3100 Oak Grove Road, Poplar Bluff	

Grocers:

Town & Country Supermarket	573.663.2305
MO-21, Ellington	
Town & Country Supermarket	573.223.4711
7 Hal's Plaza, Piedmont	

Gene's Towing & Salvage

Rt 1, Patterson	573.856.4536
Wayne County Auto Parts	573.223.7521
1010 N. Main, Piedmont	

Airport:

Piedmont Municipal Airport	573.223.4528
Industrial Dr, Piedmont	

Real Estate:

Heartland Realty	573.223.2769
311 Piedmont Ave, Piedmont	
Poplar Bluff Realty, Inc.	573.785.7600
1800 N. Westwood, Poplar Bluff	

Dental:

Rowland Dental Clinic	573.223.4513
100 S. Main, Piedmont	

Pharmacy:

Brown's Pharmacy	573.663.7707
375 Trimmer Dr, Ellington	
Piedmont Physician Associates	573.223.4233
Rt 4 Box 4515, Piedmont	
Piedmont Family Clinic	573.223.4800
1 Hal's Plaza, Piedmont	
Town & Country Supermarket	573.223.4711
7 Hal's Plaza, Piedmont	

Contact us

**A sincere THANK YOU to our
2019 Visitors Guide sponsors.**

All contents copyright 2019 Clearwater Lake Visitors Guide

**CLEARWATER LAKE
ASSOCIATION**

P.O. Box 241
Piedmont, MO 63957
573.223.4849

clearwaterlake@windstream.net
www.clearwaterlake.org

Ernie's Sales & Service

The Jet Doctor

"Your Shallow Water Headquarters"

WWW.JETDOCTOR.COM

M
E
R
C
U
R
Y

E
V
I
N
R
U
D
E



**Blazer Boats
Outboard Jets
Rivercraft Trailers
Custom Built Jet Boats**



**Family Owned Since
1965: Carole Ernie
David Martin, Manager
Phone: (573) 461-2244
Fax: (573) 461-2222**



**Email us at:
ernies@
mcmo.net**